

PalmRControl

version 1.1b1

by Rod

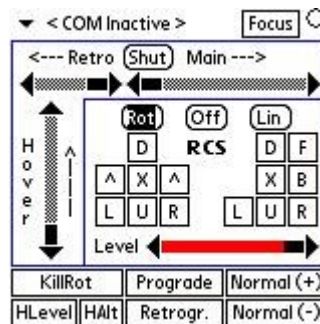
Let you to remotely control a vessel using a Palm and a serial connection like Bluetooth, cable, etc. You can control the vessel in focus or another one external, e.g. a robotic probe controlled from within your spaceship for inspection or repair.

You can switch from one vessel to another, control Retro, Main, Hover, RCS Lin and Rot, the main preprogrammed attitude control (KillPilot, Hold level, Hold Altitude, Prograde, Retrograde, Normal +, Normal -).

You can set the sensitivity on the RCS, and invert the F/B, D/U Linear RCS directions.

The keys may be set in 4key+"5-way navigator" or in the older 4key+Up+Down configuration.

PalmRControl uses the standard aerodynamic control surfaces, if present, for a better control in atmospheric flight, the response sensitivity may be set runtime.



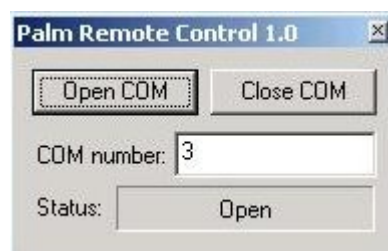
Use the display buttons or the hardware keys to drive the spaceship.

The vessel list let you to set the controlled vessel without change the focused one, this way you may control a robotic vessel from within your one; to set the focus to the selected one press [Focus], the Focused (first person) and the controlled vessels may be different or coincide at your choice.

The (Shut) button shutdown Main, Retro and Hover engines for a fast off.

LED indicator:

| | |
|--------|---------------------------|
| WHITE | connection closed |
| YELLOW | connection closed PC side |
| GREEN | connection full open |
| RED | command data coming |



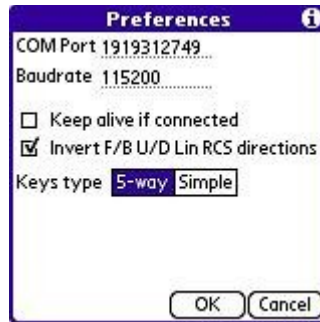
In the Modules dialog set the COM serial port you are using to connect the PC to the Palm

Fast start list

1. Copy PalmRControl.dll in \Orbiter\Modules\Plugin and copy PalmRControl.prc in the Palm
2. Configure your Palm and PC to communicate each other through a serial interface (e.g. Bluetooth). If you are in doubt use HyperTerminal to see the coming control characters from the Palm, close HyperTerminal when finished or the COM serial port will be locked for Orbiter use. Remember the COM serial port you set in the PC, you'll need it in step 5
3. In the Orbiter starter panel select the Modules TAB and Activate the PalmRControl
4. Select your vessel scenario and start it
5. Open the PalmRControl panel (Ctrl+F4), set the COM serial port and open it
6. If not already started it's time to start PalmRCtrl in the Palm; from menu set Preferences as you need and Open the COM connection

That's all, you should be able to control the vessel with your Palm

Preferences



COM Port

Insert the short (e.g. 0) or the expanded number (e.g. 32768)

- (0) 32768 Physical HotSync (RS-232 or USB)
- (1) 32769 IR port
- (2) 32770 Debug console (RS-232 or USB)
- (3) 32771 RS-232 cradle
- (4) 32772 USB cradle
- (5) 1966289464 Cradle port using the 68328 UART
- (6) 1966622042 Cradle port using the 68328EZ UART
- (7) 1966486832 Specifies the IR port on the upgrade card
- (8) 1651794800 Bluetooth Connection virtual
- (9) 1769104237 IrDA IRComm protocol virtual
- (10) 1919312749 Bluetooth RFCOMM virtual

If the port you wish to use isn't listed here look to the documentation or your device

Keep alive

Avoid power off while COM is open

Keys type

Choice from a 5-way navigator or a simple 4key+Up+Down

Invert directions

Invert F/B and U/D directions in Linear RCS

Installation

PalmRControl.dll

If you're updating it first disactive the previous one from Orbiter
Copy it in the \Orbiter\Modules\Plugin directory
From the Orbiter start dialog select the Modules TAB and activate it

PalmRControl.prc

Copy it in the Palm as usual

Disinstallation

PalmRControl.dll

Disactivate it from the Orbiter start dialog Modules TAB
Remove it from \Orbiter\Modules\Plugin

PalmRControl.prc

Normal remove (preferred):

Remove it from the palm launcher menu as any other application

Manual remove (expert only):

Erase PalmRCtrl.prc

Erase Saved and Unsaved preferences with Creator ID equal to PRCo

Version Info

1.0

Start release

This software is released as freeware in the hope may be useful and enjoyable :-)
Read the included license and warranty.
All trademarks are own by the respective owners.
Some software function may be regulated by local law, any illegal use is forbidden.

Copyright(C) 2006, Rodolfo Turco, all rights reserved
<http://www.webalice.it/rodolfo.turco>
email:rodolfo.turco_A T_virgilio.it (replace _A T_ with @)

Software License and Warranty Agreement

With the term "the software" I intend the binary program named PalmRControl and the associated files.

You should carefully read the following terms and conditions before using "the software", your use of "the software" indicates your acceptance of this license and warranty agreement.

If you do not agree to all of the terms of this agreement, you shall remove "the software" from your storage media and cease any further use of "the software".

"The software" is a freeware program and may be used and distributed free of charge provided that "the software", this License and Warranty Agreement and the copyright notice may not be modified.

You assume all risks and consequences associated with the use of "the software".

THE SOFTWARE IS PROVIDED BY THE AUTHOR AND CONTRIBUTORS ON AN "AS IS" BASIS; ANY EXPRESS OR IMPLIED WARRANTIES, INCLUDING, BUT NOT LIMITED TO, THE IMPLIED WARRANTIES OF MERCHANTABILITY, NON INFRINGEMENT AND FITNESS FOR A PARTICULAR PURPOSE ARE DISCLAIMED.

IN NO EVENT SHALL THE AUTHOR OR CONTRIBUTORS BE LIABLE FOR ANY DIRECT, INDIRECT, INCIDENTAL, SPECIAL, EXEMPLARY, OR CONSEQUENTIAL DAMAGES (INCLUDING, BUT NOT LIMITED TO, PROCUREMENT OF SUBSTITUTE GOODS OR SERVICES; LOSS OF DATA OR PROFITS; BUSINESS INTERRUPTION; OR DATA BEING RENDERED INACCURATE) HOWEVER CAUSED AND ON ANY THEORY OF LIABILITY, WHETHER IN CONTRACT, STRICT LIABILITY, OR TORT (INCLUDING NEGLIGENCE OR OTHERWISE) ARISING IN ANY WAY OUT OF THE USE OF "THE SOFTWARE", EVEN IF ADVISED OF THE POSSIBILITY OF SUCH DAMAGE.